

THE ART STUDENTS LEAGUE PRESENTS

## Faces of the League

Curator Anki King in conversation with artists  
Ellen Eagle and Jerry Weiss, exploring the current exhibition at  
The Phyllis Harriman Mason Gallery

EVENT DATE

Thursday March 23, 2021, 6pm - 7pm

[View Our Event Page](#)



Dorothy Dehner, *Portrait of Wilhemina Weber Furlong*  
1931, oil on canvas

Join us for a live gallery view of *Faces of the League*, our current exhibition on display in the Phyllis Harriman Mason Gallery, led by curator Anki King, with special guests and League instructors, Ellen Eagle and Jerry Weiss.

*Faces of the League* features 60 portraits from the League's permanent collection, with a special focus on works that display a personal connection between sitter and artist, and a less formal air than traditionally commissioned portraits. Anki King will be on site at the gallery, personally bringing viewers through the exhibition as they tune in live and explaining the history behind featured pieces in the collection. Instructors Ellen Eagle and Jerry Weiss will share information about their personal connections to some of these works and speak about how the history of portraiture plays a role in their work and in the art world at large today.

This exhibition includes rarely seen works by previous League instructors and students as well as other artists with connections to The League. Of the 218 portraits in The League's collection, the 60 works selected all vary stylistically, and represent the state of portraiture from 1850 to the present day.

Throughout history artists have attempted to represent the human condition by capturing the expressions of the human face. In the 19<sup>th</sup> century, as photography became popular, delivering an exact likeness of the subject became less important. Beginning in the 1850s, with Impressionism, and again in the 1920s, with Expressionism, experimentation and the quest to find a livelier way of capturing the face changed the history of portraiture forever. *Faces of the League* exposes this art-historical shift in how the human face is perceived and has been captured by artists.

**Ellen Eagle** holds a BFA from the California College of Arts and Crafts. She studied with Daniel Greene, Michael Burban and primarily with Harvey Dinnerstein at The Art Students League. Eagle’s work is represented by Forum Gallery, the Lyme Academy College of Fine Arts, Concordia College, and Tomasulo Gallery. In 2011–12, she exhibited in China and returned there in 2017 to teach art teachers to work with pastels.

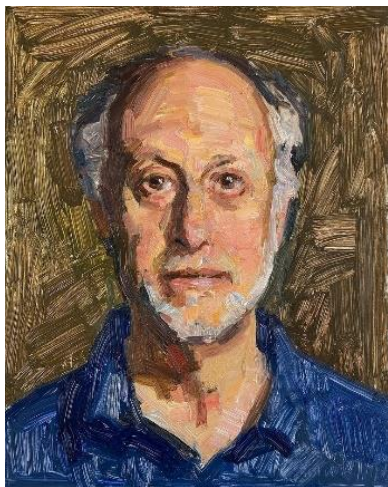
Eagle’s work has been shown in such venues as the National Academy Museum, Frye Art Museum, New Jersey State Museum, Long Beach Museum of Art, Staten Island Museum, Albright Knox Gallery, Arkansas Art Center, the Butler Institute of American Art, the Baker Museum, and the Lingnan Museum of Fine Arts in China. Eagle’s work has been reproduced in numerous magazines, and books. Richard Halstead’s article, “The Quiet Power of Ellen Eagle” was published in *Fine Art Connoisseur*, January 2016 issue.



Ellen Eagle, *Self-Portrait*, pastel

Eagle has also written many articles for *Linea Art Journal*, *International Artists Magazine* and many more. Her book, *Pastel Painting Atelier*, was published by Watson-Guption in April 2013. Eagle is the recipient of many awards and grants. Her pastel paintings are in private and public collections throughout North America and China.

[www.elleneagleportraits.com](http://www.elleneagleportraits.com)



Jerry Weiss, *Self-Portrait*, oil on canvas

**Jerry Weiss** studied drawing with Roberto Martinez in Miami, Florida, and drawing and painting with Harvey Dinnerstein, Robert Beverly Hale, Ted Seth Jacobs, Mary Beth McKenzie, and Jack Faragasso at The Art Students League and the National Academy of Design in New York City.

Jerry Weiss has had one-man exhibitions at the Boca Raton Museum of Art, the Lyme Academy College of Fine Arts, and galleries in New York, Massachusetts, Connecticut, New Jersey, and Maine. His paintings are represented in numerous public, private, and corporate collections, including the New Britain Museum of American Art, Boca Raton Museum of Art, and the Harvard Club of New York City.

Mr. Weiss teaches workshops and has lectured in Florida, New York, Washington, Maine, New Mexico, and Colorado. His artwork and teaching methods have been featured in *American Artist Workshop* and *American Artist Drawing* magazines, and he is a longtime contributor to *The Artist’s Magazine*. He is represented by the Chester Gallery (Chester, CT); Elizabeth Moss Gallery and Copper & Smith Gallery (Essex, CT); and Portraits, Inc.

[www.jerryweiss.com](http://www.jerryweiss.com)